



# WOODSTOCK SCHEDULER

## Release notes v2020.7

support@remsoft.com  
(506) 450-1511

## What's New in the 2020.7 Release

Learn about new features and bugs fixed in the 2020.7 Release.

This release is a Major Update that addresses known issues and bug fixes. It also comes with a few important upgrades which are listed below.

## New and Improved Features

Functionality updates in this release include:

### Crew Movement Cost Feature

If you are concerned about the operational and financial impacts of constant harvest crew assignment changes and long distances between a crew's assigned units, the Crew Movement cost feature can help.

The Crew Movement feature in Scheduler is a short-term model implementation aimed at reducing the overall cost associated with Operational Planning. This feature leverages the crew Sequence builder functionality to include movement costs in the matrix, so that the solver can take crew movement costs into consideration when optimizing decisions. [Contact Remsoft](#) to discuss how we can help you upgrade your Solution with this feature.

### Activity Gantt View

The Activity Gantt View is a tool that can show scheduled action and it does not rely on maps, unlike the standard Gantt chart available in the Schedule view. This is particularly helpful for visualizing the schedule of activities related to prescriptions and regimes, and also for viewing activities that are scheduled after the harvest action. It also provides unit delivery information.

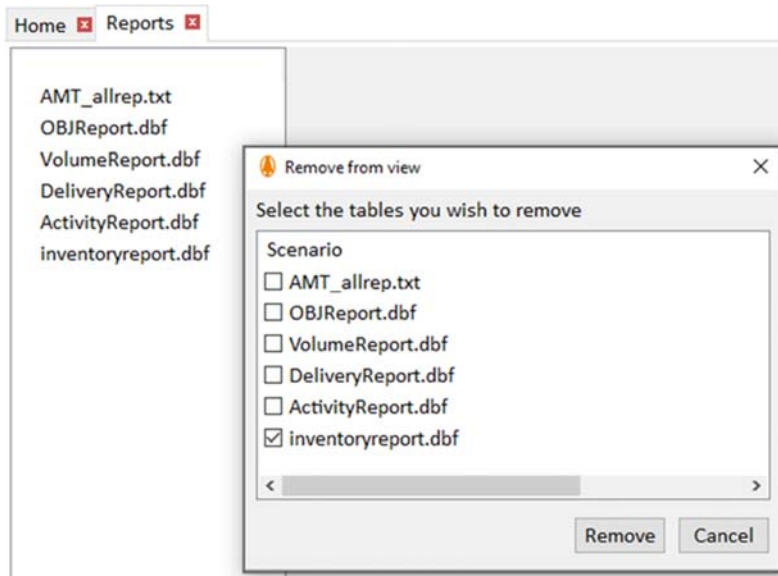
### Online Documentation\*

Woodstock Scheduler now has an online knowledge base! Different sections of the application are directly linked to pertinent help content. It also includes automatic Google translation which, while not perfect, can be useful. We will progressively add Quick Tours and other content to support productive use of new features. \*Requires the most up-to-date versions of the default internet web browsers.

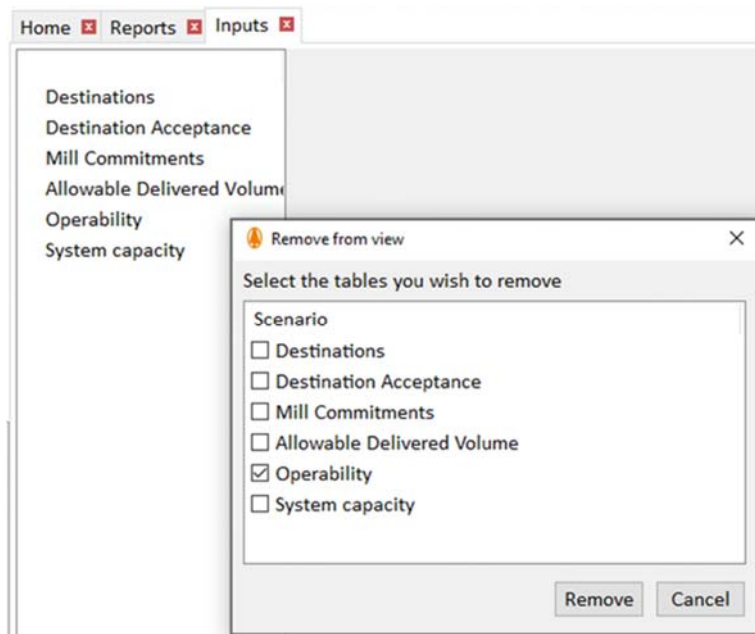
## New Feature Summary:

- Updated branding in the software interface.
- Usability improvements:
  - Mouse click and drag functionality to change the order of sub-units in the detailed edit dialog.
  - Maps now remember how legend layouts were organized in the previous session, providing faster access to where you left off.
  - Users can zoom in and out of the maps with a mouse scroll.
  - A Procedures tab has been added to the run options, to automate and improve the user modeling workflow. The options included here are Solution specific. A dialog will require the user to confirm the triggering of a procedure, upon a click on the button. The procedures help users automate data preparation and manipulation tasks. Ask Remsoft how we can help to improve your workflow using these procedures.

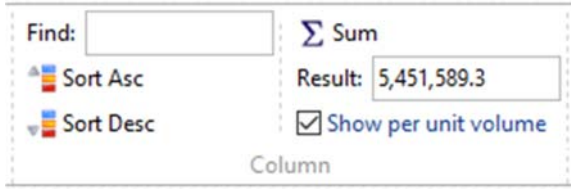
- A Tab on the “Run Model” form allows selection of sections to update.
- Gantt view pop up menu options include “Rotate Period labels”.
- Analysis enhancement:
  - Users can now display additional previously defined reports.



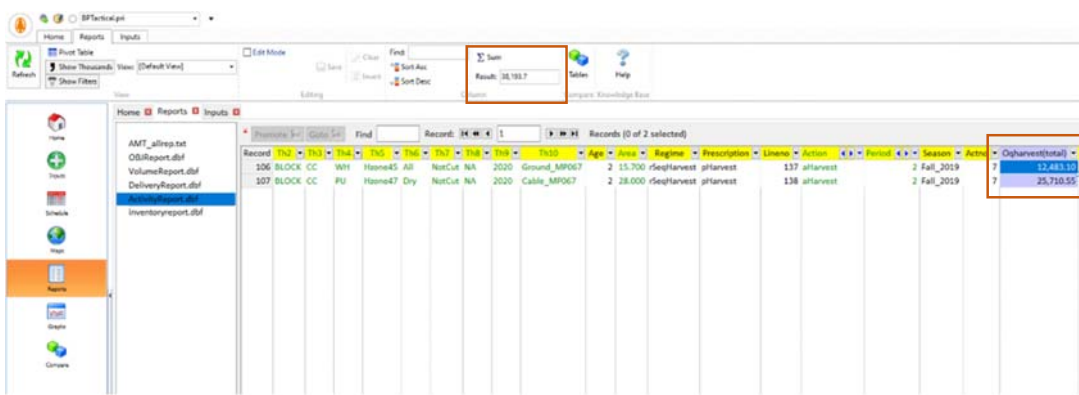
- Users can now display or hide available input tables. You can control the content of the Inputs visualization tables list, to choose from those that are available and display only those that matter.



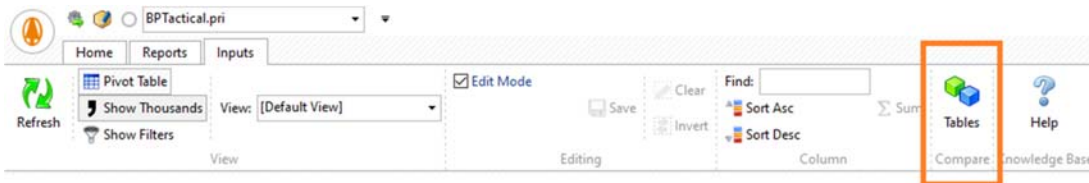
- o Button added to show “Per unit values” in delivery reports or “totals”



- o Button added to calculate the sum of a column of numeric values.



- o On the Reports and Inputs table view, new functionality allows highlighting of the differences between values in tables of different datasets.



## Bug Fixes and Issues Addressed

The list of issues addressed includes bugs that were reported to Remsoft Technical Support and are fixed in the 2020.7 Woodstock Scheduler Release.

See the Issues fixed in the 2020.7 Release in a table at the bottom of this article. There are no Deprecated Features in this Release.

## Feedback and Support

As always, we welcome your feedback on our products. To suggest new features that would bring value and improve efficiency in your planning workflow, please send us an email at [support@remsoft.com](mailto:support@remsoft.com) (subject line: Feature Suggestion). If you experience any technical issues with this release, please contact [support@remsoft.com](mailto:support@remsoft.com) and our Support team will assist you.

## Bug Fixes

Ticket Number	Description
5583	Stumpage Calculator: Negative stumpage values in stumpage calculator window.
7378	Run Model: Icons too big for the allocated space making them look cut off.
7380	Inputs: Sizing issues with "Custom Filter" pop-up the first time we open it.
7381	Schedule: Create/Release buttons not disabled/greyed out when nothing is selected.
7382	Inputs: Calendars - Adding a "Holiday/Weekend" creates a duplicate item within the dropdown.
7385	Maps: Spatial Outputs: Output calculations and spatial transitions seem to be off by one period.
7391	Inputs: Discard edits in custom view with filter will release filter but filter criteria remains in field.
7395	Stumpage Calculator: Transport distance from 'x' harvest area always displays WkName (can't see aliased name).
7398	Schedule: Saved edits to date constraint columns from Maps attribute table or Inputs attribute table not reflected in Schedule. Must close/reopen.
7399	Custom Stumpage Calculator: Stumpage Switch / Stumpage Revenue edits: Stumpage blocks moved around on Gantt chart -> New periods not applied.
7401	Schedule: Details: New drag/drop scheme in Details window should not allow locked HUs to be dragged.
7410	Inputs: "Modify Structure" tool should be disabled for SQLLITE users.
7411	Infeasibility Report: 'Save as' button doesn't work.
7415	Schedule: Date Range Designer: Issues with ambiguous dates.
7429	Home: Switching between models results in Dataset attribute description section being squished. Need to reset window.
7430	Datasets: 'Last Edit' time and date never seem to update.
8433	Run Model: Implement limit for "Number of Periods/Days per period" field.
8434	Maps: The last item that was opened from the toolbar is shown when we double click on a polygon.
8435	Schedule: Total not shown for the last column(total).
8439	Maps: Select by Attribute popup not sized properly (default size).
8441	Reports: Pivot table window default size too small.
8442	Maps: Identify - [Manage...] should not be shown in the dropdown if there are no custom view to manage.
8443	Compare: Scale change when changing the graph type.
8444	Schedule: When selecting a empty row and then checking "Hide Empty Rows" - the row is still selected in the background.
8445	Compare: "Calculation" dropdown shows the same items twice after closing/reopening section.
8462	Inputs: 'Save custom view' dialog default view name field too small.
8466	Home: Manage Datamart window glitchy looking when no database is linked in db.ado.
10916	Stumpage Calculator misreporting harvest costs and net stumpage.
10917	Tables: SUM box too small.
10920	Reports: Delivery Report aliasing not working (intermittent).

<b>11091</b>	Inputs: Numeric columns in the Inputs tab have decimal values that are rounded.
<b>11560</b>	Crew Movement: Performance issues in Sequences Builder.
<b>11588</b>	Reports: Delivery panel appears even though 'show delivery' is not clicked.
<b>11779</b>	Schedules: Intermittent 'invalid masks detected' error when using locks.

## Known Issues

<b>Ticket Number</b>	<b>Description</b>
<b>7383</b>	Schedule: When setting a "Finish Before" date the orange bar is not shown unless refresh is clicked.
<b>7390</b>	Schedule: Show periods 1..x dropdown does not update to reflect change in planning horizon length if Schedule left open during run.
<b>7392</b>	Schedule: Harvest Units not locked in sequence show wrong dates in Details window.
<b>7394</b>	Stumpage Calculator: Changing the output resets the stumpage values but not the Percent column value.
<b>7396</b>	Stumpage Calculator: When flipping between outputs in the window, the two Net Stumpage columns also take on the values of the chosen output
<b>7427</b>	Schedule: Custom Date Range: Calendar issues when using different date formats.
<b>7433</b>	Schedule: Destination/Delivery values not updated as schedule is edited, new assignments created.
<b>7438</b>	Custom Woodflow Scheduler UI: Access Violation in two locations when user doesn't have dataset connected.
<b>7440</b>	Custom Woodflow Scheduler UI: Locked loads don't display consistently in blue, seems to alternate displaying blue cells.
<b>7450</b>	Scheduler: Duplicate records appearing in the Gantt chart (under some conditions).
<b>8414</b>	Inputs: Pivot Table: Copying and pasting a subset of data incorrectly includes the column header
<b>8427</b>	Scheduler Graphs page, doesn't add a new <new page> right after creating one
<b>8449</b>	Schedule: Selecting a crew selects all polygons related to it on the map - even those that are hidden
<b>8450</b>	Reports/Inputs: Trying to access the compare functionality, when screen is smaller, generates an error message
<b>8454</b>	Run Model Dialog: Solve time hidden by MIP gap % if window is too small
<b>8511</b>	Scheduler Compiler Graphics not working with some models.
<b>11788</b>	Scheduler Editor: Opening background editor when .txt file is open in main GUI results in Access Violation error.